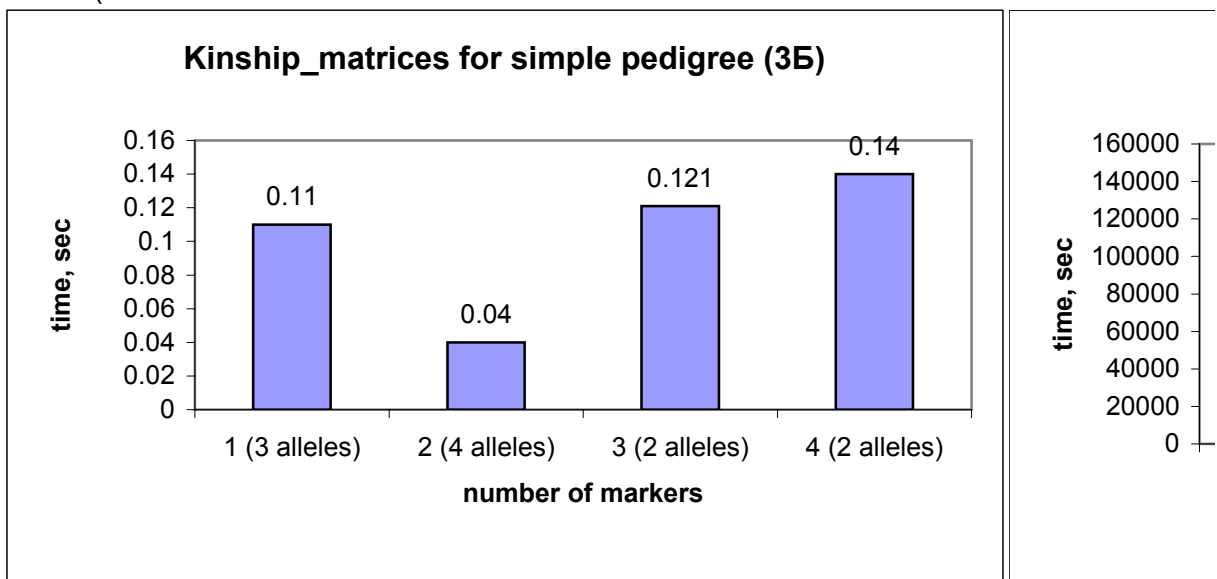


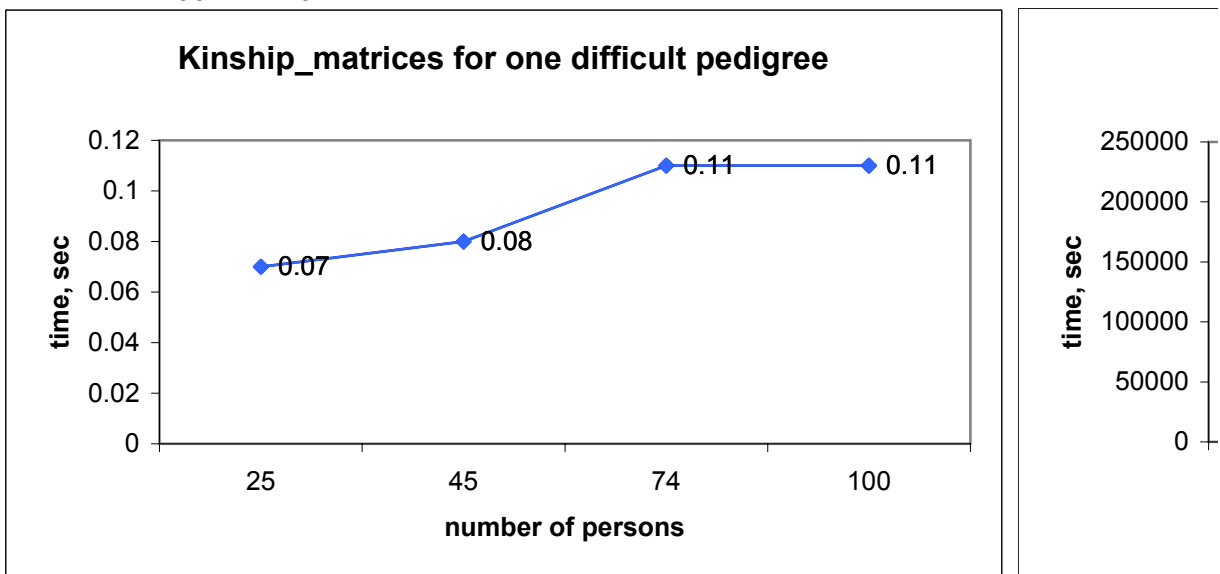
Simple pedigree means pedigree without loops, difficult pedigree means according to the number of markers

number of markers	Option type of pec	Kinship_matrices (1)		Haplotyping (2)		Program exec.time1	
		simple	difficult	simple	difficult	simple	difficult
1	+	+	+	+	+	0.1100 SEC	
2	+	+	+	+	+	0.3310 SEC, 0.12 SEC, 0.23	
3	+	+	+	+	+	0.1210 SEC, 0.0700 SEC, 0.1	
4	+	+	+	+	-	0.1400 SEC	0.1100 SEC

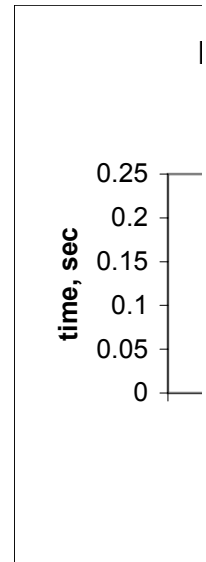
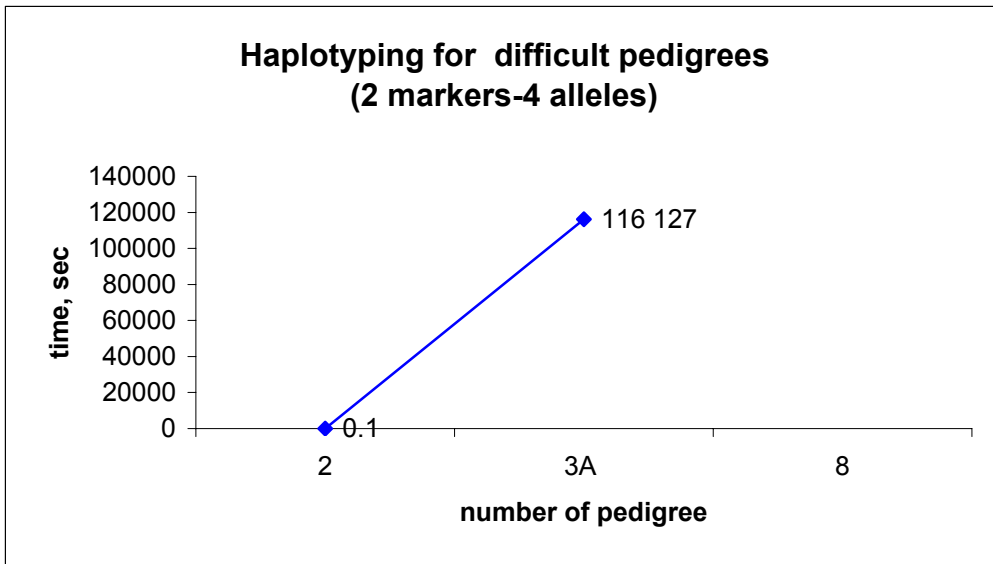
1 (3 alleles)	0.11
2 (4 alleles)	0.04
3 (2 alleles)	0.121
4 (2 alleles)	0.14



25	0.07
45	0.08
74	0.11
100	0.11



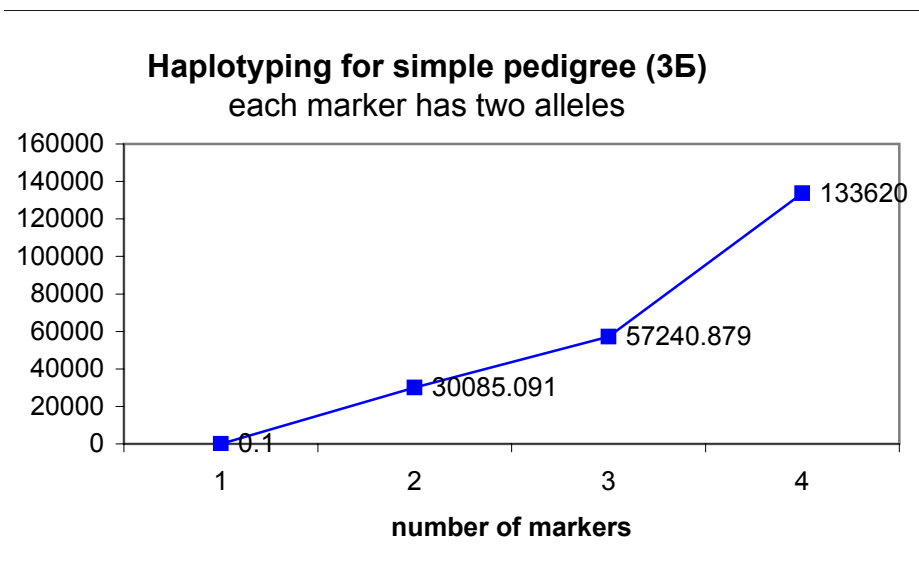
	2	0.1
3A	116 127	
	8	



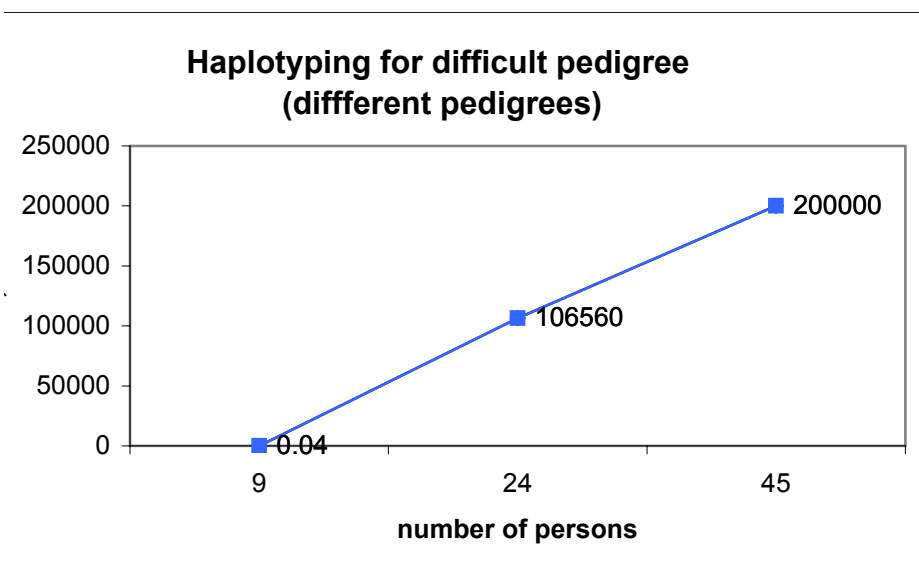
ding to with loops

Program exec.time2		Depending on size of pedigree			
simple	difficult	Option type of pec	Kinship_matrices (1) simple	Haplotyping simple	
		size of pedigree			
0.100 SEC	2.9750 SEC	<10	+	+	
30085.0910 SEC	0.0400 SEC, 106560 SEC, 0.1 SEC, 116127 SEC	<=25	+	+	+
57240.8790 SEC	0.0900 SEC	<=100		+	
133620 SEC		>=1000		+	

- 1 0.1
- 2 30085.09
- 3 57240.88
- 4 133620

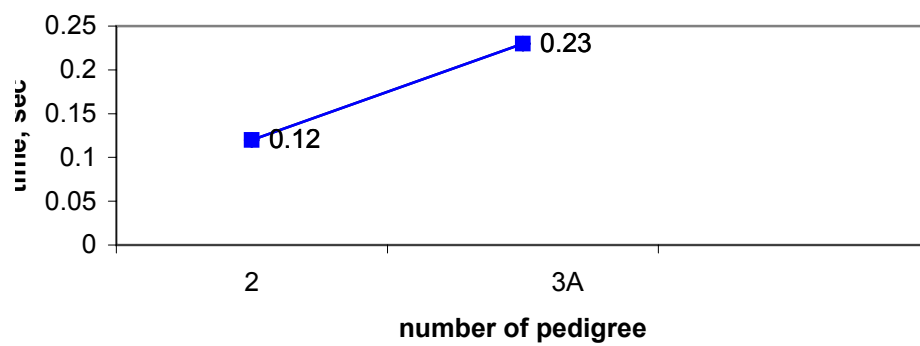


- 9 0.04
- 24 106560
- 45 200000



2	0.12
3A	0.23

Kinship_matrices for difficult pedigrees
(2 markers, each marker has 4 alleles)



g (2)	Program exec.time1		Program exec.time2	
	simple	difficult	simple	difficult
+	0.3310 SEC,0.012 SEC		0.0400 SEC,0.0900 SEC, 0.1 SEC	
+	0.4800 SEC,0.10700 SEC, 0.100 SEC,300		106560 SEC, 116127 SEC	
-		0.0800 SEC,0.1100 SEC,0.1100 SEC		
+				